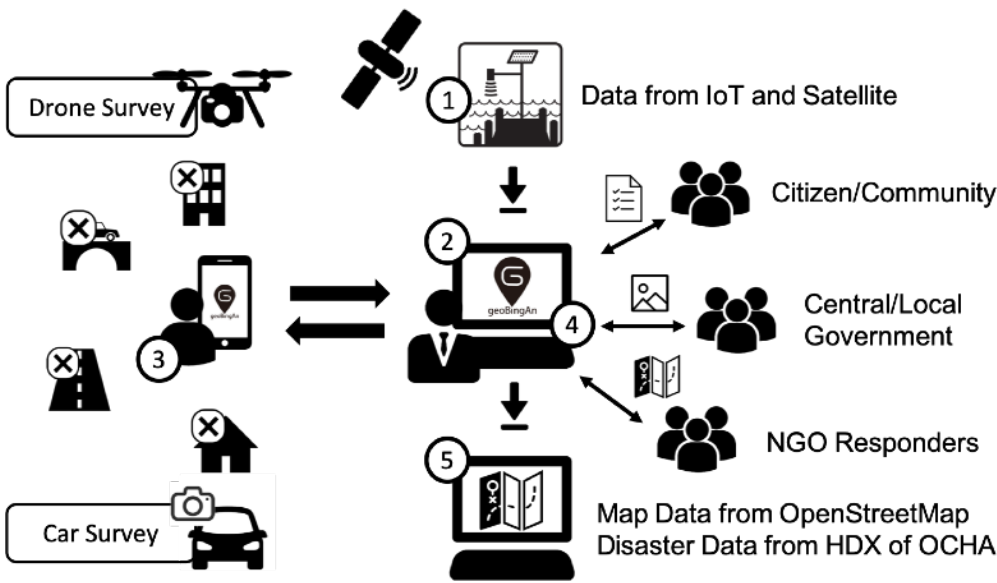


geoBingAn 究平安

Strengthen the Community Capacity for Disaster Resilience

Data from IoT/Crowdsource on GIS

Just few clicks to set up your own Data Operating Center



Information Flow for geoBingAn (究平安)

geoBingAn (究平安), which means “all the best” in Taiwanese, is an App/Web service platform that currently deployed by multi-regional government agencies, NPOs/NGOs, and communities for the strengthening the disaster resilience. Through the adoption by Asian Development Bank, geoBingAn has been leveraged by city-level and central governments in Armenia, Bangladesh, Philippines, and Fiji. More use cases in Japan, Jordan, and Taiwan are also growing. Combining with the IoT sensor data and the volunteer reports on integrated Web-GIS & Tweet-like interface, geoBingAn presents an innovative way for harmonizing various data and GIS, also assist the administrators for real-time situation awareness in supporting of decision making.

WEB AND APP

Support Web, Mobile-Web, and App on Android and iOS

OFFLINE

Map data works offline and survey report is store-n-forward based

GEO-DATA AND TASK

Harmonize data from human/sensor, can then turn into assigned task



Software as a Service (SaaS)

You may subscribe geoBingAn service without building a whole new platform



ICT4SDG

geoBingAn has various templates in response to disaster and emergency



GeoThings Inc.

We build mobile-friendly service for the users just like using Twitter and Google Maps/Form

Specification of geoBingAn

geoBingAn (究平安) service comes with templates for various application scenarios, including field survey and validation, shelter management, disaster crowdsourcing, and IoT/AI harmonization.

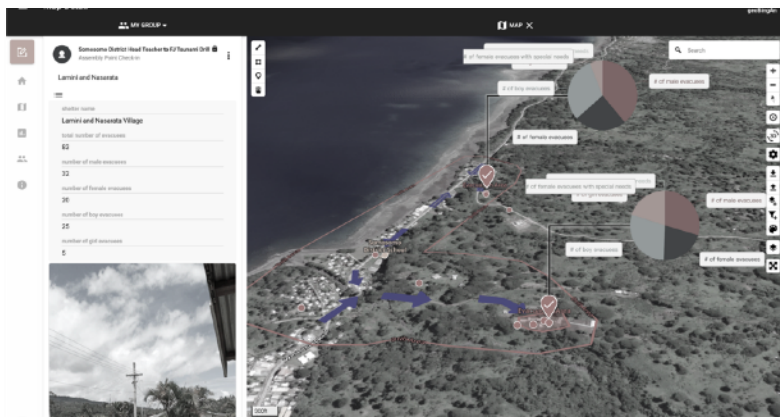


geoBingAn SaaS for your Data Intelligence

Community	Trial	geoBingAn	Enterprise
<p>All Collected Data and Report will go Public</p> <p>Unlimited Group User with 1GB storage</p> <p>Including geoBingAn form, GPS trace, offline map, task dispatch management, notification, and Statistics</p>	<p>Private Data Hosting</p> <p>1 Group Admin plus 5 Group Member with 1GB storage</p> <p>Including data access control, geoBingAn form, GPS trace, offline map, task dispatch management, notification, and Statistics</p>	<p>Private Data Hosting</p> <p>Unlimited User With 20GB storage</p> <p>Including data access control, geoBingAn form, GPS trace, live streaming, offline map, task management and notification, Statistics, and Group Event URL</p>	<p>Private Data Hosting With Data API Support</p> <p>Unlimited User plus geoBingAn Insight with 1000GB storage</p> <p>Including data access control, geoBingAn form, GPS trace, live streaming, offline map, task management and notification, Statistics, and Group Event URL geoBingAn Data API</p>



geoBingAn supports TweetDeck-like, which is column-based interface for monitoring real-time incoming events. Administrator can customize target keyword or source of data, can setup the notification policy depends on types of incoming data, also can search and filter the contents of column based on keyword or data type.

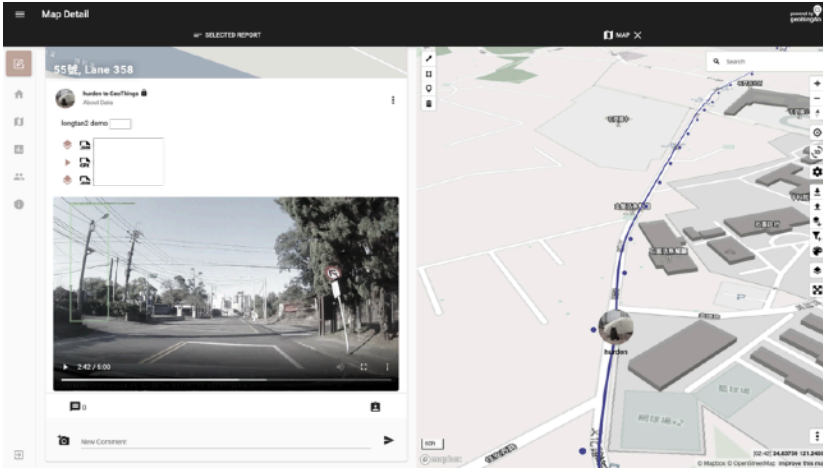


With report data with Map view sit aside, geoBingAn provides and innovative way for data and report browsing and filtering. User can visualize collected data on map, with various presentation way that including customized point, line, icon, or even pie-chart. User draw polygon can be sync to all group member so planning and tasking will be much easier than before.



Specification of geoBingAn AI

geoBingAn (究平安) service can be leveraged for smart infrastructure and environmental survey, with deep learning technology for object recognition.



1. Survey by car with mounted GoPro camera for video and GPS trace.
2. Import video to geoBingAn platform.
3. Configure the target object (such as street light or electricity box) for recognition with geoBingAn AI.
4. geoBingAn will extract the GPS trace and run the detection, then mark the object on the map as data point.

For smart city planning with green energy scenario, street light is an important role in eco-system. Based on the survey and IoT sensor data harmonization ability provided by geoBingAn, GeoThings adds deep learning feature for the automatic survey of city infrastructure. There might be some different types of street lights, yet GeoThings has the capacity in data collection, labeling, training, and run the detection for new objects



geoBingAn AI also support common objects such as person, car, bike, traffic sign, traffic light, laptop, cellphone, and so on. Those object detections can be applied to various kinds of applications. For monitoring people flow in shelter management, user will know better about if the work flows of citizen check-in and resource check-out are well designed, also to know if congestion gets worse while crowded.



Those are the recognizable objects that supported by geoBingAn AI engine.